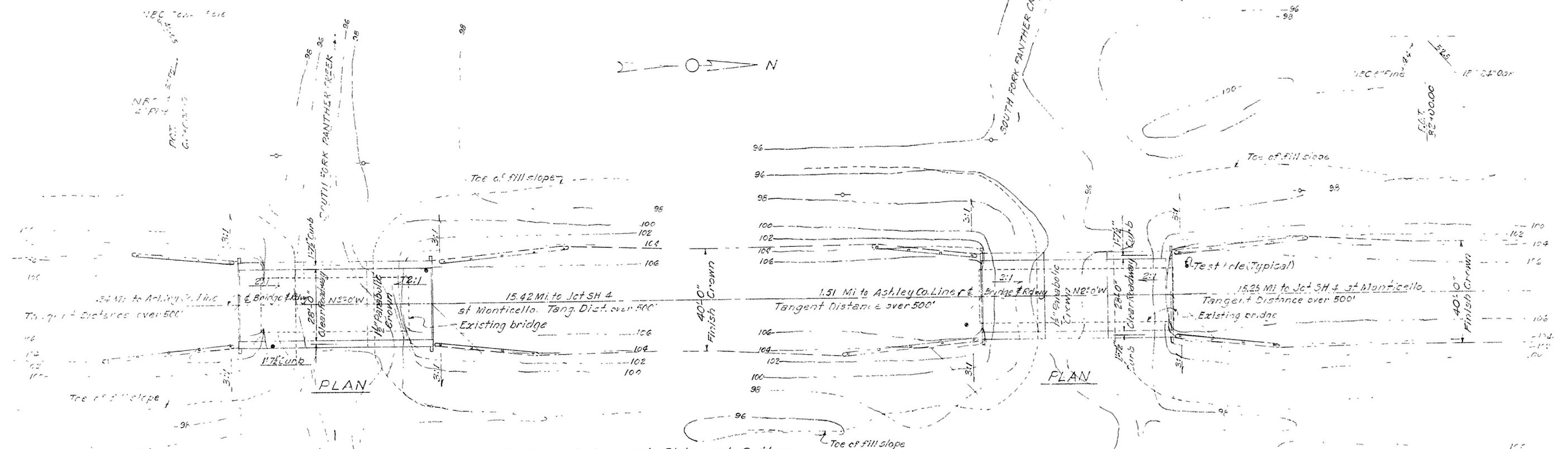
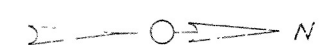


FED. ROAD DIST.	STATE	FED. AID PROJECT	FISCAL YEAR	SHEET No.	TOTAL SHEETS
6	ARK.	2690	15	54	
JOB No.					

For R/W see Roadway Plans.



Note: Use Type A Approach Slabs and Gutters at each end of each Bridge. See Dwg. No. 1898

Remove existing 58' and 77' long bridges at Sta. 70+75 and 76+79 consisting of 3 and 4-19' long treated timber spans respectively. Spans have 12-5"x12" stringers and 2"x4" laminated deck with a concrete overlay and curb. Bents are 4 piles and 12"x12" caps. See Section 1006 of the Standard Specifications

Construct 45' and 60' detour bridges at Sta. 70+75 and 76+79 respectively. Approx. 40' R of E of roadway. Deck elev. 106.2 See S.P. 1008-1

Concrete removed from existing bridges shall be placed at the proposed bridge ends as directed by the Engineer.

GENERAL NOTES

Bench Mark - Nail in Power Poles 60' Lt. Sta. 70+80. Elevation 100.00 (Assumed). Exposed corners to be chamfered 3/4" unless otherwise noted.

All piling shall be 16" octagonal precast concrete and shall be driven with an approved air, steam or diesel hammer to a minimum bearing capacity of 36 tons per pile, and to a minimum penetration of 20 feet below the ground line. Lengths of piling shown are assumed for estimating quantities only. Actual lengths to be determined in the field. Drive one 35' test pile in Bent 2 of each bridge.

Piles in End Bents shall be driven after embankment is in place.

For Details of Substructure see Dwg. No. 5421A.

For Details of Superstructure see Dwg. No. 1500A.

For Details of 16" Octagonal Precast Concrete Piles see Dwg. No. 2382.

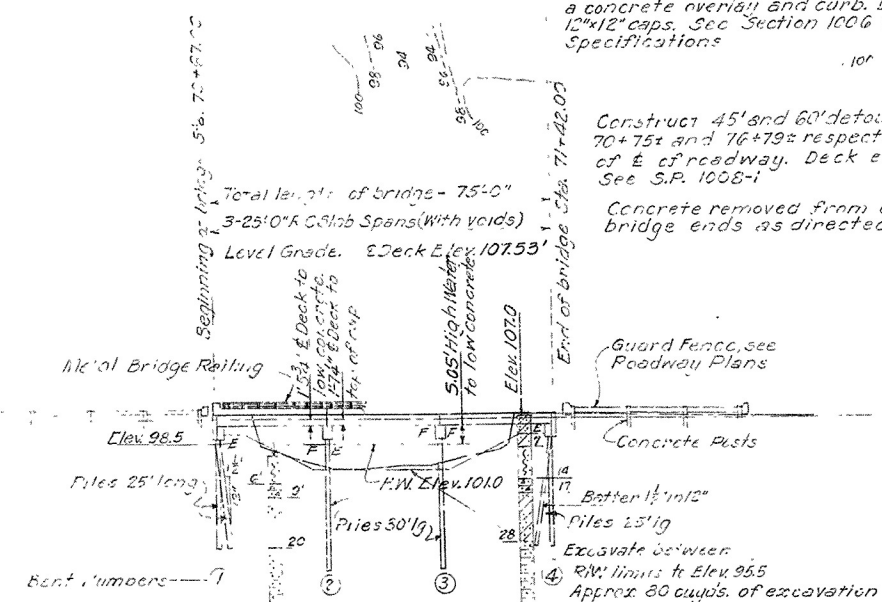
SPECIFICATIONS: Arkansas State Highway Commission Standard Specifications for Highway Construction, Edition of 1959, and designated Special Provisions.

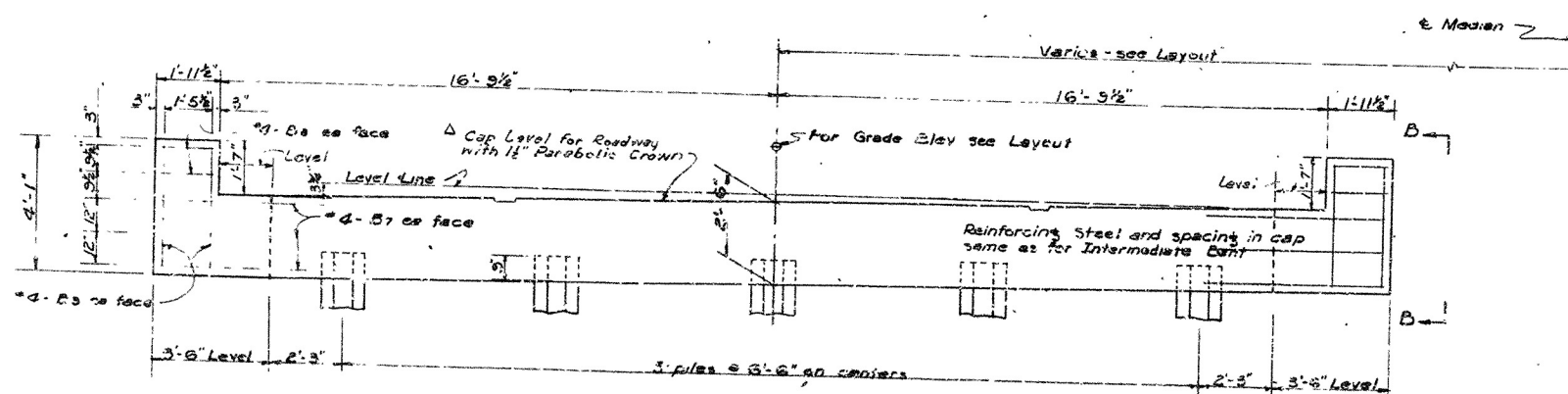
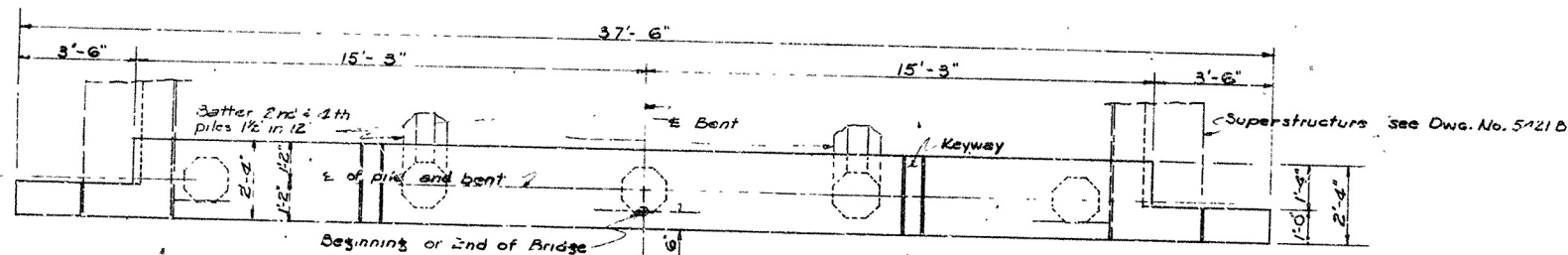
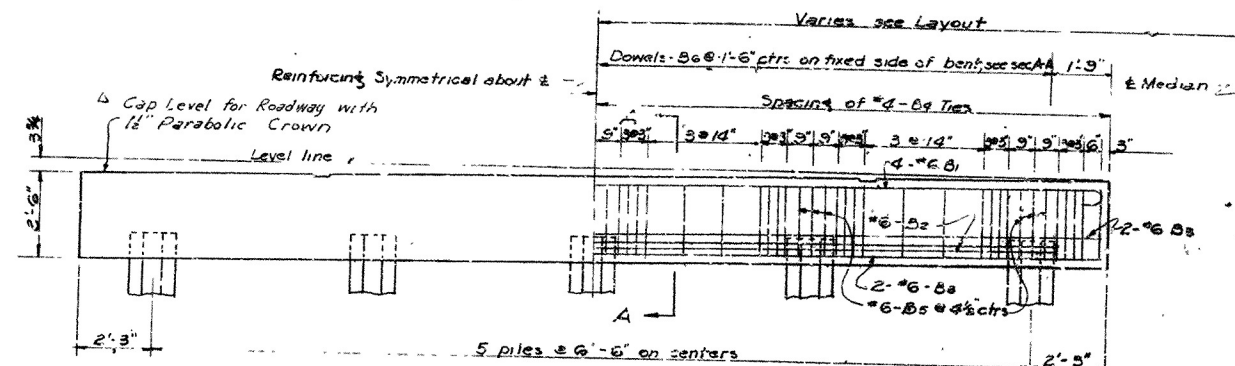
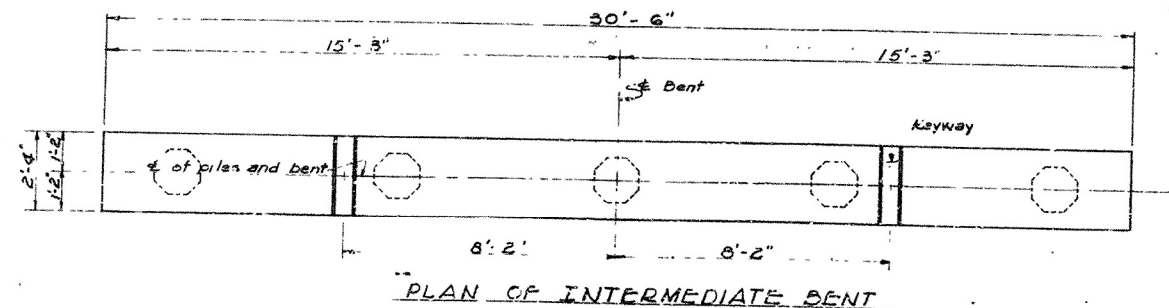
DESIGN SPECIFICATIONS: AASHTO 1961

Live Loading: HS20

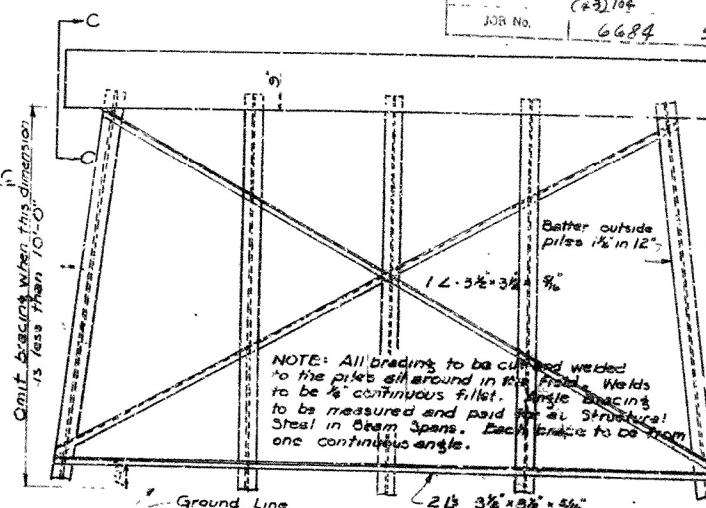
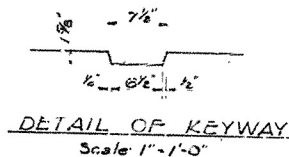
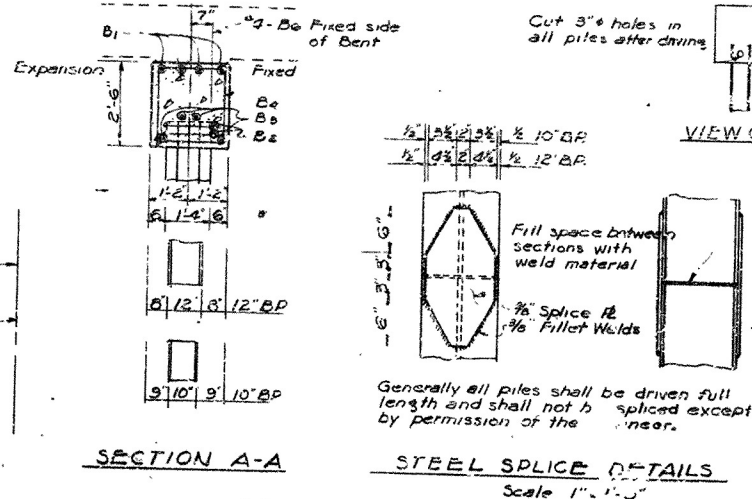
Unit Stresses: Class 3 Concrete (n=11) 1,200 psi

Reinforcing Steel 20,000 psi





NOTE: Reverse crown when the median is on the left.



GENERAL NOTES

All concrete to be Class S and shall be poured in the dry. All exposed corners to be chamfered 3/4" unless otherwise noted. Reinforcing steel to be deformed bars of intermediate grade unless otherwise noted by Special Provisions. Shop lists and bending diagrams are to be submitted for approval before fabrication is begun. All piling shall be driven to a minimum capacity of 55 tons per pile. Piling shall be either 10" H&B, 12" H&B, steel bearing piles or 16" octagonal precast concrete piles as shown on the layout. Volume occupied by embedded pile heads will not be included in the pay quantities of concrete caps. For Details of Standard 30'-0" R.C. Slab Spans see Drawing No. 5421B. SPECIFICATIONS: Arkansas State Highway Commission Standard Specifications for Highway Construction, Edition of 1959.

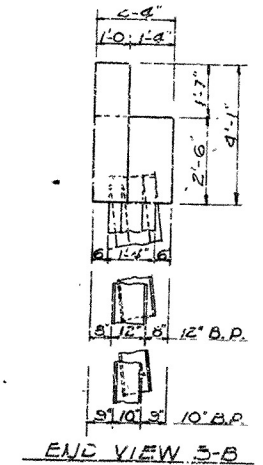
BAR LIST PER BENT

MARK	SIZE	NO. PER BENT	END	INT	LENGTH	BENDING DIAGRAM
B1	#6	4	4	4	3'-6"	B1 3'-6"
B2	#6	4	4	4	3'-6"	
B3	#6	4	4	4	30'-1"	B3 30'-1"
B4	#4	50	50	50	6'-11"	
B5	#6	15	15	15	6'-5"	B5 6'-5"
B6	#4	12	12	12	2'-6"	
B7	#4	12	12	12	5'-0"	B7 5'-0"
B8	#4	8	8	8	1'-8"	
B9	#4	8	8	8	3'-9"	B9 3'-9"
B10	#4	8	8	8	3'-9"	

Dimensions are to centers of bars

DETAILS OF STANDARD PILE BENTS FOR STD. 30'-0" R.C. SLAB SPANS

28'-0" CLEAR ROADWAY 2 CURBS @ 1'-6"
ROUTE SEC.
ARKANSAS STATE HIGHWAY COMMISSION
LITTLE ROCK, ARK.
DRAWN BY: [Signature] DATE: 7-16-57
CHECKED BY: [Signature] DATE: 8-1-57
BRIDGE NO. [Blank] DRAWING NO. 5421A
FILED AS Dwg No. 100-23-A



Parabolic Crown Note Added 3-25-60 F.R.B. Std Specification title 6-1-60 H.B.

